

Our True Intent Is All For Your Delight: A Note From Phish

Welcome to Curveball! There's nothing we care about more than the safety and well-being of every person here. Please help us make this festival a warm and welcome environment for everyone. Look out for your friends and your fellow fans. Be safe, have fun and here's to a great weekend!

Wristbands

Your wristband must be worn at all times. It is your key to enter the campgrounds and concert venue. Each time you enter or leave the campgrounds or venue your wristband will be scanned. If you have wristband issues during the festival, please visit one of the wristband customer service tents next to any of the venue entrances. If you have problems with your wristband after the festival, please visit your local wristband service technician.

The General Stores

There are four General Stores, all open round the clock. The main store is located adjacent to the Farmhaus / Farmers Market area. With over 250 items in stock, the Stores provide everything from ice to personal hygiene products to assorted sundries that you may have left at home in your sundries shed. Six-packs of beer are for sale in the Hyperbolic Spiral store from 10pm-1am nightly and outside of Venue Entrance A.

Info Tents

There is a Main Info Tent next to JEMP Records in the back of the Concert Field from 10am-1am Fri-Sun. If you need assistance in the campgrounds you may go to one of the security towers located throughout the campgrounds. Security and EMS services are available 24 hours a day throughout the event — see

map for medical tent locations. Info about towing and locksmith assistance is available at the Info Tent. Lost & Found is located at the Main Info Tent.

Day Parking

Day Parking is just for vehicles that will come and go each day — camping and overnight parking in Day Parking is not permitted. Any vehicles left overnight may be towed.

Keep Service Aisles Open

This is the only way we can provide you with fresh water, clean the toilets, pick up the trash and deliver emergency services. Let the service workers do their job — they're doing it for you! We cannot stress enough how important it is to keep the aisles open in the camping areas for everyone's safety and comfort. Please yield to service vehicles when you are walking.

Accessible Services

Stop by the Access Center for information about services, for assistance or to rest in the shade. It's located just outside the north entrance to the venue, near the Field Hospital. Accessible toilets and restrooms with flush toilets are available throughout the site. A raised viewing platform is reserved for patrons with mobility disabilities. Sign language interpreters will be provided.

Field Hospital & Medical

The field hospital is located just outside the north entrance to the venue, near Accessible Camping. There are EMS tents located throughout the campgrounds — look for the red cross symbols on this page. Lost children will be taken to the nearest medical tent. Lost arks will be returned to the Well of Souls.

Fire

As a safety measure and to keep the air quality high for everyone, there are no open fires allowed. Please use extreme caution with all forms of open flames.

When You Leave

Please be patient and yield to pedestrians as you move out of your camping area and off of the site. Be sure you are well rested, wear your seat belts, and obey the speed limits. Please respect surrounding neighborhoods and don't access blocked areas.

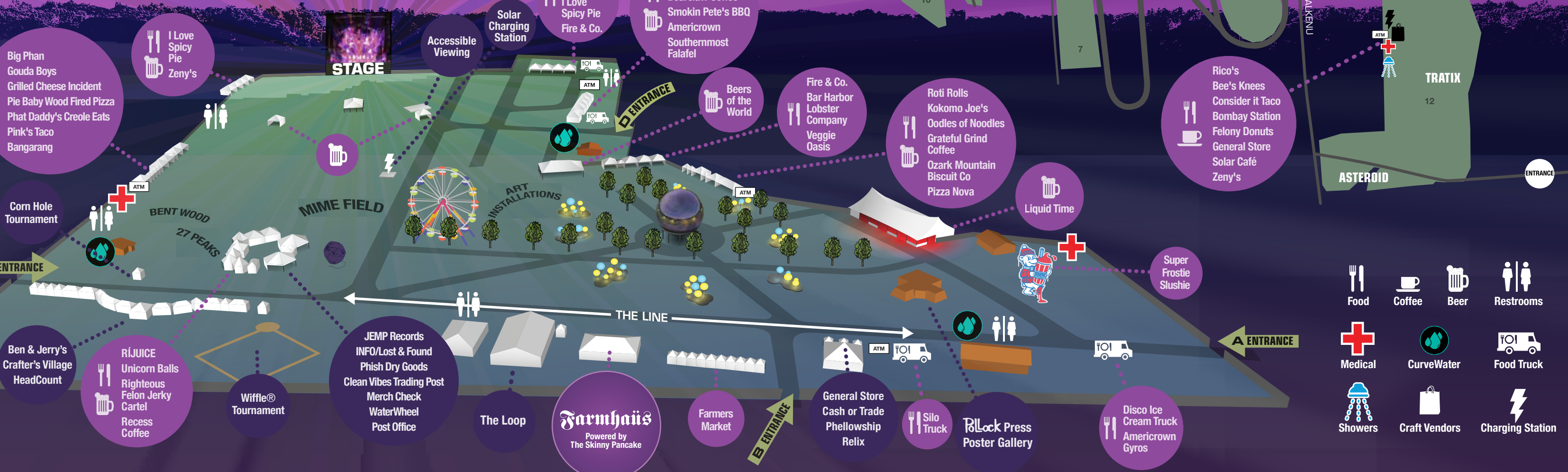
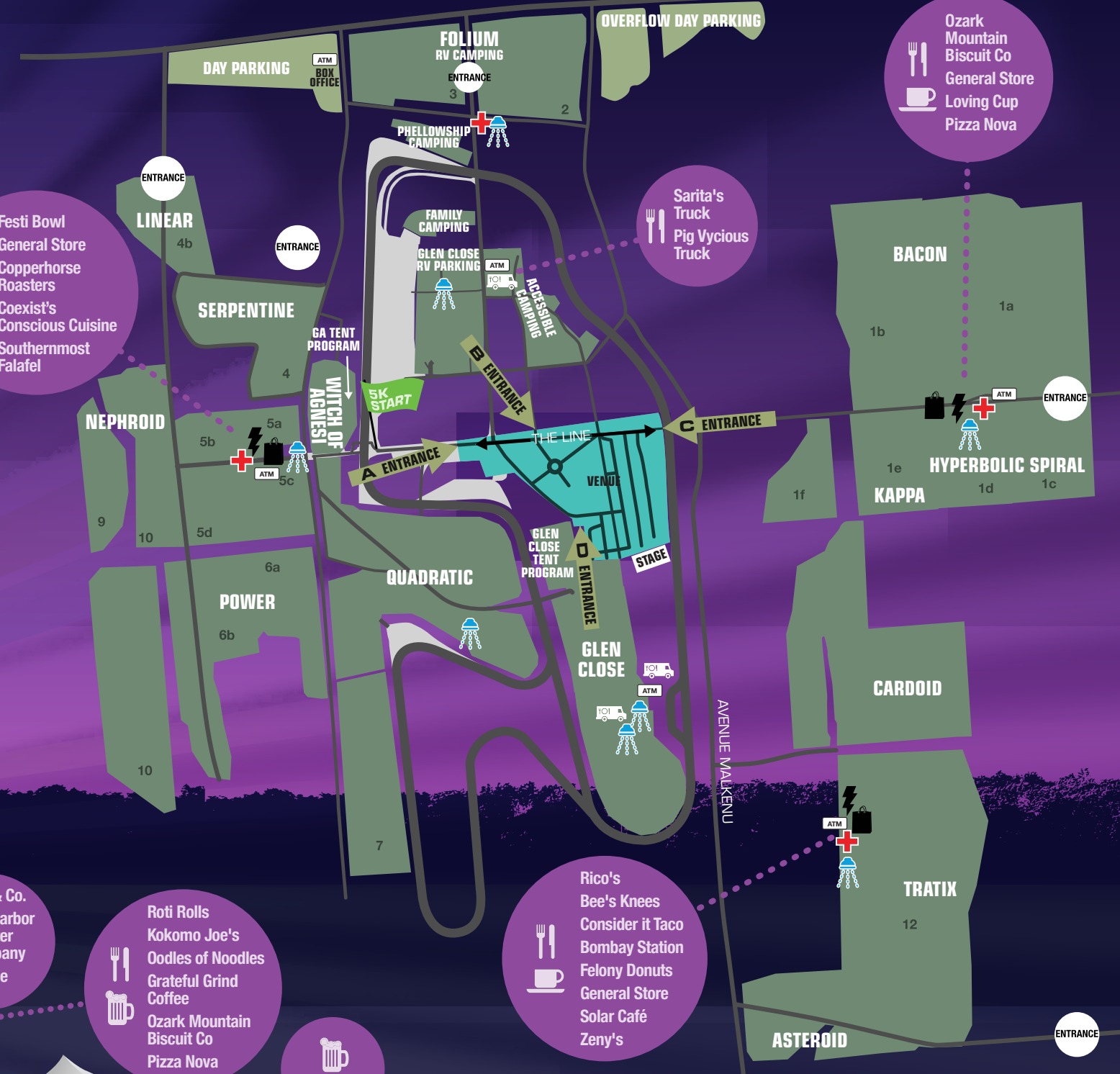
If You Leave

Don't leave now. Please don't take my heart away. Promise me just one more night. Then we'll go our separate ways.

- Festi Bowl
- General Store
- Copperhorse Roasters
- Coexist's Conscious Cuisine
- Southernmost Falafel

- Sarita's Truck
- Pig Vicious Truck

- Ozark Mountain Biscuit Co
- General Store
- Loving Cup
- Pizza Nova



- Food
- Coffee
- Beer
- Restrooms
- Medical
- CurveWater
- Food Truck
- Showers
- Craft Vendors
- Charging Station